

## Royal Blackburn Hospital Emergency Department and Urgent Care Centre and Burnley General Hospital Urgent Care Centre

### Monthly Bulletin: October 2009 to September 2010

This bulletin provides a breakdown of all injury attendances to the Royal Blackburn Hospital Emergency Department (ED) and Urgent Care Centre (UCC) and Burnley General Hospital UCC between October 2009 and September 2010.

Between October 2009 and September 2010 there were 69,286 ED and UCC attendances. The month with the highest attendance was May with 6,563 attendances (**Figure 1**). There were more male than female attendances presenting at the ED and UCCs (males=38,117; 55%).

**Figure 2** shows the age group of ED and UCC attendances for each month. Over a third (34%) of ED and UCC attendances were aged 30-59 (n=23,609) and 31% were 15-29 years old (n=21,186).

**Table 1** illustrates the source of referral of ED and UCC attendances. Self-referral (30%) was the main referral source. This was followed by brought in by others (26%), brought in by parent (25%) and 15% brought in by ambulance.

**Table 2** details the injury group of ED and UCC attendances. The majority (85%) of injury attendances were recorded as other injury. Sports injury accounted for 6% of attendances, road traffic collisions (RTC) 5% and assaults 4%.

The discharge destination of all injury attendances to the ED and UCCs is displayed in **Table 3**. Over four in ten (42%) attendances were discharged and required no follow-up treatment while 15% were discharged to their GP.

#### Assault attendances

Between October 2009 and September 2010 there were 2,511 assault attendances to the ED and UCCs. The month with the highest attendance was April with 244 attendances (**Figure 3**). There were more male than female assault attendances presenting at the ED and UCCs (males=1,852; 74%).

**Table 4** details the age group of assault attendances for each month. The majority of ED and UCC assault attendances were aged 15-29 (n=1,404; 56%) and 36% were 30-59 years old (n=914).

**Table 5** illustrates the source of referral for assault attendances to the ED and UCCs. The primary source of referral for assault attendances was by ambulance (38%). Over a-fifth (23%) were recorded as self-referred and 18% were brought in by others.

**Table 6** depicts the general discharge destination of assault attendances to the ED and UCCs. The majority of the attendances were discharged (50%), 32% required follow-up treatment and 11% were admitted.

Figure 1: Gender of ED and UCC injury attendances by month, October 2009 to September 2010

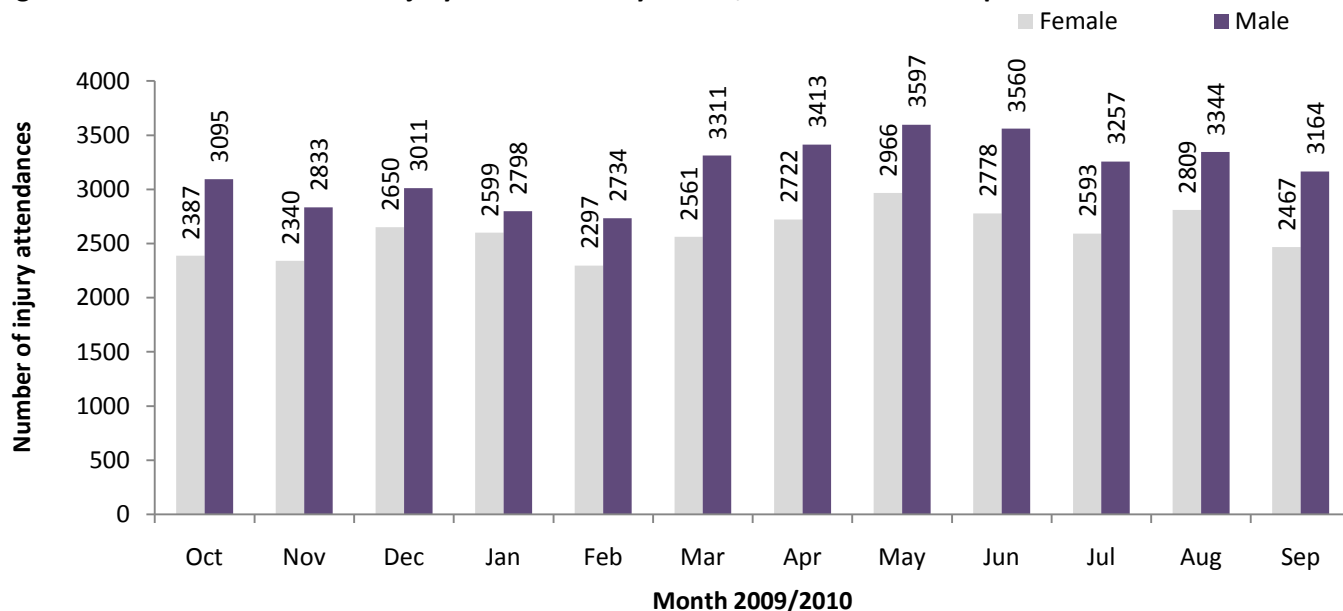


Figure 2: ED and UCC injury attendances by age group and month, October 2009 to September 2010

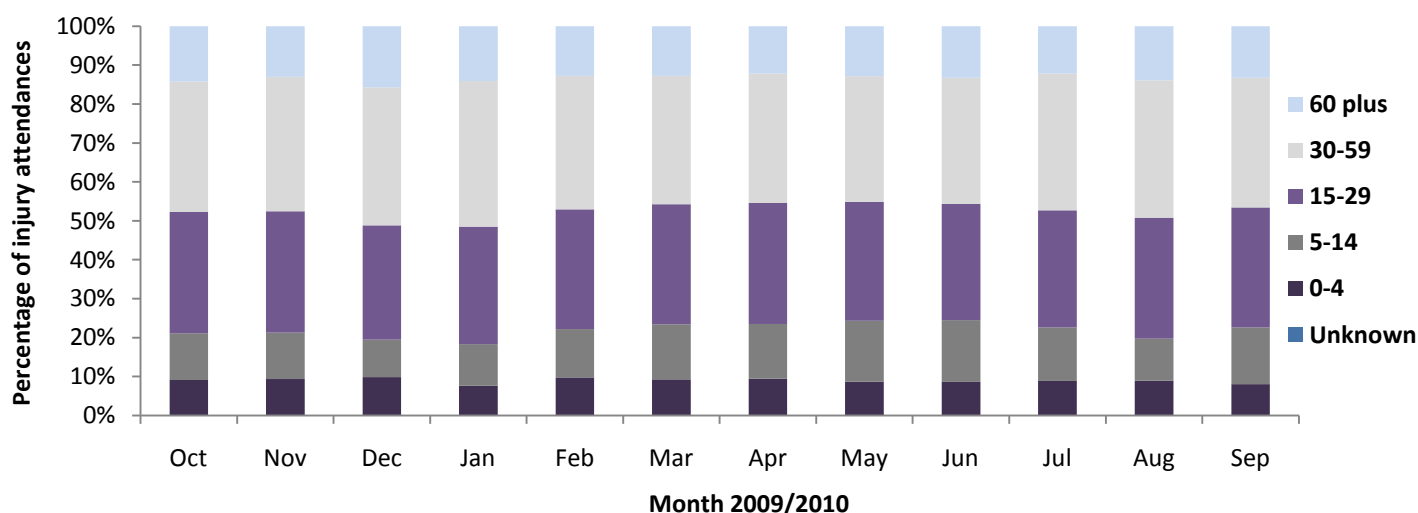


Table 1: ED and UCC injury attendances by source of referral and month, October 2009 to September 2010<sup>123</sup>

Source of referral	Oct	Nov	Dec	Jan	Feb	Mar	Apr	May	Jun	Jul	Aug	Sep	Total	%
Self-referral	1492	1336	1488	1622	1568	1855	1974	1878	1897	1928	2090	1702	20830	30
Brought in by others	1837	1452	1816	974	1125	1434	1424	1409	1351	1698	1917	1725	18162	26
Brought in by parent	1052	1111	1086	1713	1485	1636	1772	2220	2072	1209	1104	1205	17665	25
Ambulance	889	876	1022	893	744	838	833	905	805	834	788	825	10252	15
Other	124	289	158	101	13	13	32	31	19	27	26	20	853	1
Police	38	42	36	37	39	41	47	50	54	44	53	41	522	1
Emergency call	***	8	8	7	***	6	***	***	66	39	96	64	303	0
GP request	27	20	22	22	24	22	27	31	30	24	16	19	284	0
Sent by others	10	27	13	14	22	18	11	17	27	27	36	18	240	0
ED staff	8	10	8	9	6	6	8	12	11	6	9	5	98	0
Direct referral	***	***	***	***	***	***	***	***	6	13	17	7	59	0
Staff health	***	***	***	***	***	***	***	***	***	***	***	***	14	0
ED follow up	***	***	***	***	***	***	***	***	***	***	***	***	***	0
Consultant	***	***	***	***	***	***	***	***	***	***	***	***	***	0
<b>Total</b>	<b>5482</b>	<b>5173</b>	<b>5661</b>	<b>5397</b>	<b>5031</b>	<b>5872</b>	<b>6135</b>	<b>6563</b>	<b>6338</b>	<b>5850</b>	<b>6153</b>	<b>5631</b>	<b>69286</b>	<b>100</b>

<sup>1</sup> Please note that all numbers less than five have been suppressed (with \*\*\*) in line with patient confidentiality and if there is only one number less than five in a category then two numbers will be suppressed to prevent back calculations from totals.

<sup>2</sup> GP=general practitioner.

<sup>3</sup> Please note percentages might not add to one hundred due to rounding.

**Table 2: ED and UCC injury attendances by injury group and month, October 2009 to September 2010**

Injury group	Oct	Nov	Dec	Jan	Feb	Mar	Apr	May	Jun	Jul	Aug	Sep	Total	%
Other injury	4581	4268	4940	4698	4287	4889	5116	5507	5410	4977	5351	4798	58822	85
Sports injury	327	303	169	211	285	463	432	455	402	356	256	337	3996	6
RTC	322	364	335	302	261	271	317	336	309	261	276	283	3637	5
Assault	222	211	203	170	175	224	244	240	191	214	229	188	2511	4
Deliberate self-harm	30	27	14	16	23	25	26	25	26	42	41	25	320	0
<b>Total</b>	<b>5482</b>	<b>5173</b>	<b>5661</b>	<b>5397</b>	<b>5031</b>	<b>5872</b>	<b>6135</b>	<b>6563</b>	<b>6338</b>	<b>5850</b>	<b>6153</b>	<b>5631</b>	<b>69286</b>	<b>100</b>

**Table 3: ED and UCC injury attendances by discharge destination and month, October 2009 to September 2010<sup>45</sup>**

Discharge destination	Oct	Nov	Dec	Jan	Feb	Mar	Apr	May	Jun	Jul	Aug	Sep	Total	%
Discharged no follow-up	2476	2414	2354	2333	2034	2248	2319	2693	2694	2498	2600	2334	28997	42
Discharged to GP	712	717	675	874	875	1113	1172	1048	938	797	762	820	10503	15
BGH discharge to GP within unit BGH	413	374	616	521	603	741	791	783	687	780	878	661	7848	11
Clinic-fracture/orthopaedic	513	481	619	576	449	536	538	583	656	524	540	538	6553	9
RBH discharge to GP within unit RBH	397	351	422	357	400	354	405	417	343	335	437	347	4565	7
Left before treatment	305	242	317	166	225	373	377	427	406	363	347	383	3931	6
Admitted to ward	377	311	377	312	225	239	245	306	251	250	255	290	3438	5
GP treatment room	117	94	112	74	82	114	102	133	176	132	133	101	1370	2
Clinic other	34	42	26	42	28	41	52	28	45	38	40	33	449	1
Clinic-ear/nose/throat	31	31	34	33	19	34	43	40	32	30	27	25	379	1
Other hospital	19	38	32	37	24	22	22	31	33	29	39	33	359	1
Left refusing treatment	32	30	27	25	24	25	18	34	32	24	29	27	327	0
Site transfer from BGH UCC to RBH UCC	13	***	10	14	15	***	11	9	16	12	20	15	144	0
Clinic-ophthalmology	13	10	6	7	10	8	12	9	***	8	14	***	106	0
Site transfer from BGH to RBH ED	6	8	13	8	6	5	6	***	5	8	6	***	79	0
Clinic-oral/dental surgery	11	7	***	5	***	***	5	7	8	5	11	6	73	0
Other	6	10	8	***	***	***	8	5	***	13	5	5	73	0
Community/district nurse	***	***	***	***	***	***	***	***	***	***	***	***	33	0
Admitted to theatre	***	***	***	***	***	***	***	***	***	***	***	***	23	0
Died in department	***	***	***	***	***	***	***	***	***	***	5	***	23	0
Dead on arrival	***	***	***	***	***	***	***	***	***	***	***	***	5	0
Site transfer from ED RBH to UCC BGH	***	***	***	***	***	***	***	***	***	***	***	***	***	0
Site transfer from ED RBH to UCC RBH	***	***	***	***	***	***	***	***	***	***	***	***	***	0
Site transfer from RBH UCC to RBH ED	***	***	***	***	***	***	***	***	***	***	***	***	***	0
<b>Total</b>	<b>5482</b>	<b>5173</b>	<b>5661</b>	<b>5397</b>	<b>5031</b>	<b>5872</b>	<b>6135</b>	<b>6563</b>	<b>6338</b>	<b>5850</b>	<b>6153</b>	<b>5631</b>	<b>69286</b>	<b>100</b>

<sup>4</sup> RBH=Royal Blackburn Hospital and BGH=Burnley General Hospital.

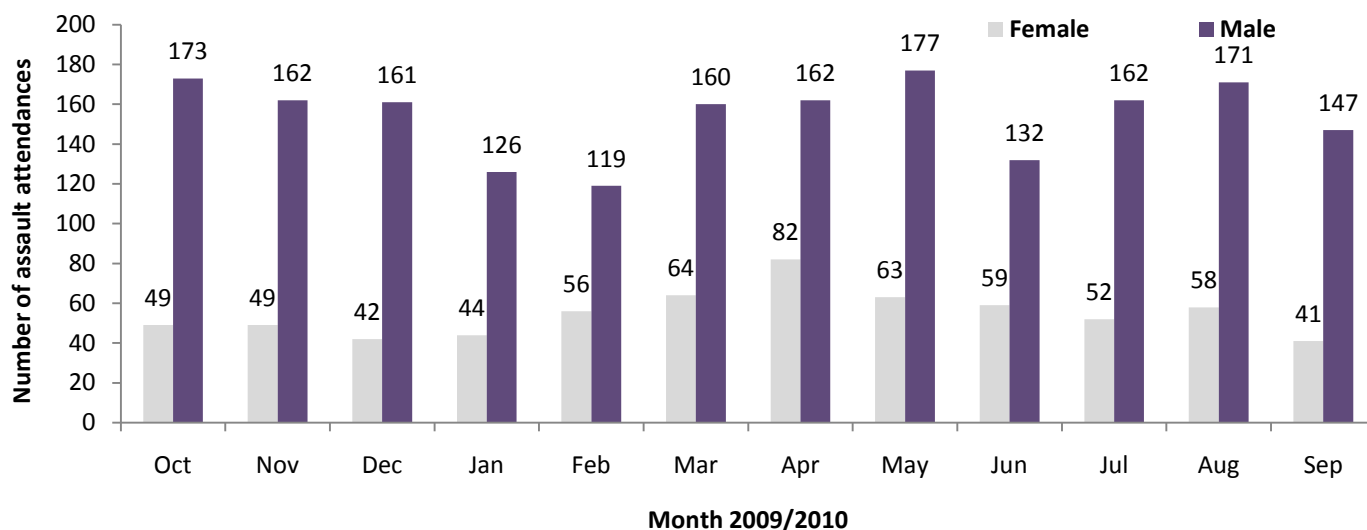
<sup>5</sup> Clinic other includes: trauma clinic, dressing clinic; GUM clinic; medicine and diabetic clinic; and, dermatology/plastic surgery clinic. Other includes: residential home; police custody; other; and referred to own dentist. Other hospital includes: other hospital; and, emergency hospital transfer.

## Assaults

**Table 4: ED and UCC assault attendances by age group and month, October 2009 to September 2010**

Age group	Oct	Nov	Dec	Jan	Feb	Mar	Apr	May	Jun	Jul	Aug	Sep	Total	%
Unknown	***	***	***	***	***	***	***	***	***	***	***	***	***	0
0-4	***	***	***	***	***	***	***	***	***	***	***	***	***	0
5-14	12	13	11	8	7	17	12	13	13	15	10	7	138	5
15-29	125	127	113	88	96	127	128	143	102	111	136	108	1404	56
30-59	79	71	70	74	69	74	97	82	69	85	78	66	914	36
60 plus	6	***	8	***	***	6	6	***	6	***	5	7	51	2
<b>Total</b>	<b>222</b>	<b>211</b>	<b>203</b>	<b>170</b>	<b>175</b>	<b>224</b>	<b>244</b>	<b>240</b>	<b>191</b>	<b>214</b>	<b>229</b>	<b>188</b>	<b>2511</b>	<b>100</b>

**Figure 3: Number of ED and UCC assault attendances by gender and month, October 2009 to September 2010**



**Table 5: ED and UCC assault attendances by source of referral and month, October 2009 to September 2010**

Source of referral	Oct	Nov	Dec	Jan	Feb	Mar	Apr	May	Jun	Jul	Aug	Sep	Total	%
Ambulance	75	81	99	63	69	91	88	98	61	81	69	70	945	38
Self-referral	51	45	31	41	40	52	67	53	37	49	67	45	578	23
Brought in by others	51	47	44	39	40	48	19	18	16	44	44	36	446	18
Brought in by parent	23	23	11	14	16	23	56	60	57	22	15	20	340	14
Police	14	***	9	12	9	***	12	9	9	13	18	15	132	5
Other	7	10	5	***	***	***	***	***	***	***	***	***	26	1
Emergency call	***	***	***	***	***	***	***	***	8	***	11	***	24	1
Sent by others	***	***	***	***	***	***	***	***	***	***	***	***	11	0
GP request	***	***	***	***	***	***	***	***	***	***	***	***	6	0
ED staff	***	***	***	***	***	***	***	***	***	***	***	***	***	0
Consultant	***	***	***	***	***	***	***	***	***	***	***	***	***	0
Direct referral	***	***	***	***	***	***	***	***	***	***	***	***	***	0
Staff health	***	***	***	***	***	***	***	***	***	***	***	***	***	0
<b>Total</b>	<b>222</b>	<b>211</b>	<b>203</b>	<b>170</b>	<b>175</b>	<b>224</b>	<b>244</b>	<b>240</b>	<b>191</b>	<b>214</b>	<b>229</b>	<b>188</b>	<b>2511</b>	<b>100</b>

**Table 6: ED and UCC assault attendances by discharge destination and month, October 2009 to September 2010**

Discharge destination	Oct	Nov	Dec	Jan	Feb	Mar	Apr	May	Jun	Jul	Aug	Sep	Total	%
Discharged	103	104	98	86	78	108	111	115	105	118	124	97	1247	50
Follow-up	78	64	57	64	62	83	87	71	57	65	68	59	815	32
Admitted	32	22	34	16	25	18	28	28	15	18	22	19	277	11
Other	9	21	14	***	10	15	18	26	14	13	15	13	172	7
<b>Total</b>	<b>222</b>	<b>211</b>	<b>203</b>	<b>170</b>	<b>175</b>	<b>224</b>	<b>244</b>	<b>240</b>	<b>191</b>	<b>214</b>	<b>229</b>	<b>188</b>	<b>2511</b>	<b>100</b>

Published November 2010

Johnathan Rooney (Lancashire TIIG Officer)

Centre for Public Health, Liverpool John Moores University, 3<sup>rd</sup> Floor, Henry Cotton Campus,  
Liverpool, L3 2ET

Tel: 0151 231 4513 Email: j.rooney@ljmu.ac.uk